

AKASO

BRAVE 7

ACTION CAMERA



USER MANUAL

anba

Content

Important Messages	06	>>
Micro SD Card Use	07	>>
IPX8 Waterproof Rating	08	>>
Overheating Detection	10	>>
1. Specifications	11	>>
2. What's in the Box	12	>>
3. Your Brave 7 Action Camera	13	>>
4. First Use	15	>>
4.1 Unboxing	15	
4.2 Take the Camera Out of the Camera Frame	15	
4.3 Detach the Camera Frame from the Packing Box	16	
4.4 Charge the Battery Separately	16	
4.5 Install the Battery	17	
4.6 Install the Micro SD Card	17	
4.7 Charge the Battery in the Camera	18	
4.8 Power on the Camera	18	
5. Getting Started	19	>>
5.1 Operation Instructions	19	>>
(1) Powering On and Off	19	
(2) Preview Screen	19	
(3) Using the Shutter Button	20	
(4) Quickly Switching Modes	20	
(5) Zooming in or out	21	
(6) Video Sound	22	
(7) Album Access	23	
(8) Setting Resolution	23	
(10) Switching Screens	24	
5.2 Quick Operation Guide	25	>>

5.3 Quick Menu	26	>>
(1) Voice Control	27	
(2) Wifi	27	
(3) Screen Brightness	28	
(4) Screen Lock	28	
(5) One Key Fast Shooting	28	
(6) Grid	29	
(7) Preferences	29	
(8) Exiting the Quick Menu	29	
6. Video	30	>>
6.1 Video Modes	30	>>
(1) (1) Video (default)	32	
(2) Timelapse Video	33	
(3) HyperLapse Video	34	
(4) Slow Motion Video	35	
6.2 Video Settings	36	>>
(1) Resolution	38	
(2) Timelapse Interval	39	
(3) HyperLapse Speed	40	
(4) Slow Motion Speed	41	
(5) Image Stabilization	42	
(6) Metering	42	
(7) EV	43	
(8) ISO	44	
(9) White Balance	44	
(10) Sharpness	45	
(11) Bit Rate	45	
(12) Filter	46	
(13) Fragment	46	
(14) Driving Mode	47	
(15) Wind Noise Reduction	47	
(16) Dark Light Mode	48	
(17) Distortion Calibration	48	

(18) Capture Duration	48	
(19) WDR	49	
(20) HindSight	49	
6.3 Video Settings Menu	51	>>
7. Photo	53	>>
7.1 Photo Modes	53	>>
(1) Photo (default)	55	
(2) Timelapse Photo	56	
7.2 Photo Settings	57	>>
(1) Resolution	58	
(2) Metering	58	
(3) EV	59	
(4) ISO	60	
(5) Shutter	60	
(6) White Balance	61	
(7) Sharpness	61	
(8) Filter	62	
(9) Self-Timer	62	
(10) Image Format	63	
(11) Capture Duration	63	
(12) Burst Photo	64	
(13) Photo Quality	64	
(14) WDR	65	
(15) Distortion Calibration	65	
7.3. Photo Settings Menu	66	>>
8. System Settings	67	>>
8.1 Preferences	67	>>
(1) Voice Control	68	
(2) Language	68	
(3) Video Format	69	
(4) Code	69	
(5) Power Frequency	70	

(6) Wireless Connection	70	
(7) Remote	72	
(8) One Key Fast Shooting	72	
(9) Gyroscope	73	
8.2 General Settings	73	>>
(1) Screen Brightness	73	
(2) Sound	74	
(4) Video Sound	77	
(5) Auto Power Off	78	
(6) Screen Saver	78	
(7) Date & Time	79	
(8) Date Stamp	80	
(9) Format	81	
(10) Factory Reset	82	
(11) Voice Command	82	
(12) About	82	
9. Album	83	>>
9.1 Album Access	83	>>
9.2 Album Interface	84	>>
9.3 Video Playback	84	>>
(1) Playback Videos	84	
(2) Video Screen	85	
9.4 Photo Playback	85	>>
(1) Playback Photos	85	
(2) Photo Screen	86	
9.5 File Deletion	86	>>
(1) Delete Files from the File List	86	
(2) Delete Files on the Video Screen	87	
(3) Delete Files on the Photo Screen	87	
10. Data Transmission	88	>>
10.1 Transferring Files to a Computer	88	>>
10.2 Webcam Mode	88	>>

11. App Download & Wifi Connection	89	>>
11.1 Camera Wifi	89	>>
11.2 Features of the AKASO GO App	89	>>
11.3 Download the AKASO GO App	89	>>
11.4 Create An Account for the AKASO GO App	90	>>
11.5 Connect to the AKASO GO App via Wifi	91	>>
11.6 AKASO GO App Menu	94	>>
(1) User Interface	94	
(2) Video	94	
(3) Photo	97	
(4) Album	99	
(5) System Settings	102	
12. Remote	107	>>
12.1 Connect to the Remote	107	>>
12.2 Button Operation Instructions	108	>>
12.3 Indicators	108	>>
13. Mount Your Brave 7	109	>>
14. Troubleshooting	110	>>
15. Battery Maintenance	110	>>
15.1 Maximizing Battery Life	110	>>
15.2 Battery Handling and Storage	111	>>
16. Precautions	112	>>
17. Contact Us	112	>>

Important Messages

Congratulations on your new AKASO Brave 7 Action Camera! You must be excited to use your new camera, but please spend some time familiarizing yourself with this manual first so that you get the most out of your camera's features and use it safely.

It's of great importance to regularly update the camera's firmware. To do this, you can connect your camera to the AKASO GO app via the camera's Wifi, and then download and install the newest firmware.

1. This camera is a precision instrument. Safeguard it from drops or impacts to prevent damage.
2. Store the camera away from devices or objects with strong magnetic fields or power, like motors and magnets.
3. Ensure the camera operates within its recommended temperature range. Avoid leaving it at high or low temperatures for extended periods, as this can reduce its lifespan.
4. This camera body is waterproof, but make sure all covers are tightly closed and the lens area is free from debris before immersing it underwater.
5. After using the camera in saltwater, rinse it with fresh water and gently dry it with a soft cloth.
6. Don't charge the battery for long periods of time.
7. Keep the battery away from kids and pets to prevent accidents.
8. Remove the battery from the camera if you don't plan to use it for an extended period.
9. Store the camera away from sharp objects and moisture-prone areas.



Micro SD Card Use

To capture photos and videos, you'll need a separate memory card. We recommend branded memory cards that meet the following criteria:

1. U3
2. Capacity up to 512GB (FAT32)

Warm Tip:

1. Format the memory card in the camera before using it to ensure compatibility.
2. Memory cards larger than the specified maximum capacity can cause issues like non-recognition or even camera malfunctions like unresponsiveness or firmware failure.
3. Regularly reformat your memory card for optimal performance. Remember, reformatting erases all data, so transfer your photos and videos before reformatting. With FAT32, the card will stop recording and create a new file if the file size of a recording reaches 4GB.

Notes

1. Don't use the card near strong currents or magnetic fields.
2. Don't let the card touch metal objects, or use any metal tools on it case it's squeezed, bent, or falls.
3. Store the card in dry places away from corrosive substances.
4. Insert the card into the card slot in the right orientation.
5. Ensure that no foreign items are inserted into the card slot.
6. Turn off the camera before inserting or removing the card.

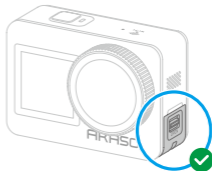


IPX8 Waterproof Rating

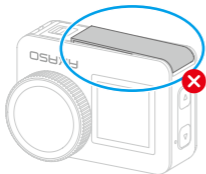
The Brave 7 action camera boasts an IPX8 waterproof rating, allowing submersion up to 8 meters (26 feet) deep without an external case. However, always ensure the protective covers are tightly sealed to prevent any leakage. Listen for a click - this means the covers are securely fastened and you can begin your underwater adventure with peace of mind.



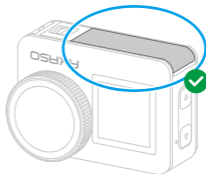
Charing cover not closed securely



Charing cover closed securely



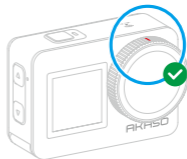
Battery cover not closed securely



Battery cover closed securely



Lens cover not closed securely

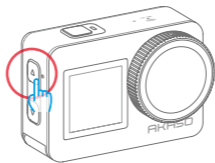


Lens cover closed securely



Notes:

1. While the Brave 7 action camera is waterproof, moisture can interfere with the touchscreen, resulting in screen drift or multiple screen jumps. Therefore, it's best to use the physical buttons for underwater operations.
2. For instance, to switch shooting modes underwater, ensure the camera displays the preview screen and then press and hold the Up button for 3 seconds.

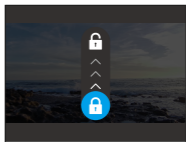
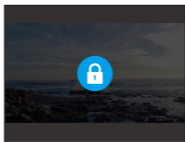


3. To prevent touchscreen issues underwater, lock the screen by tapping the Lock icon on the quick menu. Unlocking is just as simple: **tap the Lock icon and swipe up**.

Reminder: The camera cannot be operated through the touchscreen underwater; please use the buttons instead.

4. If you plan a deep dive, equip your Brave 7 with the waterproof case (sold separately) to prevent it from getting soaked.

Note: The camera won't record sound when it's in the waterproof case.



Overheating Detection

The Brave 7 action camera is designed to detect overheating conditions. Should the camera get too hot, a red warning stating **“Temperature too high! The camera will automatically shut down”** will display on the touchscreen, followed by an automatic shutdown. When this happens, allow the camera to cool down before using it again. This helps bump up performance by protecting the camera's hardware from damage.

Heads up:

1. The Brave 7 action camera's optimal operating temperature range is between -5°C and 45°C (23°F and 113°F). Using the camera in excessively high or low temperatures may impact its performance.
2. Capturing at a high resolution and frame rate can cause the camera to consume more power and heat up more quickly, especially in warmer environments. Consider using lower settings in such conditions to lower the risk of overheating your Brave 7.



1. Specifications

Brand	AKASO
Name	4K Versatile Brave 7 Action Camera
Model	Brave 7
Size	66×44×34mm
Net weight	112g
Material	Plastic, silicone, glass
Battery capacity	1350mAh
Battery life	90mins of recording time in 4K, and 140mins in 1080P. Note: This may vary based on the environment and usage.
Wireless network	RF 2.4G+Wifi 2.4GHz
Camera Waterproof Rating	IPX8
Remote Waterproof Rating	IPX4
Working Temperature	-5°C~45°C (23°F~113°F)
External Microphone	Supported but sold separately. Note: Be sure to purchase external microphones compatible with this camera.



2. What's in the Box



Brave 7
x1



Camera Frame
x1



Battery Charger
x1



Battery
x2



USB Cable
x1



Remote Control
x1



Remote Control
Strap x1



Spanner
x1



Helmet Mount 1
x1



Helmet Mount 2
x1



Buckle Mount
x1



J-Hook Mount
x1



A Mount
x1



C Mount
x1



D Mount
x1



F Mount
x1



E Mount
x1



H Mount
x1



Bandage
x4



Tether
x5



Lens Cloth
x1



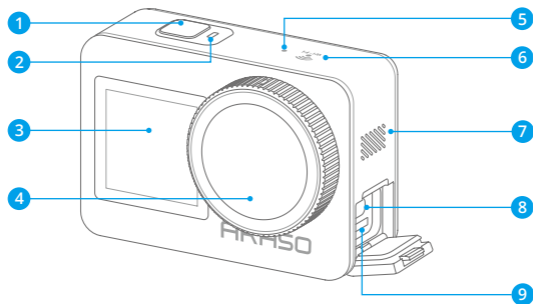
Double-Sided
Adhesive Tape x2



Quick Start Guide
x1

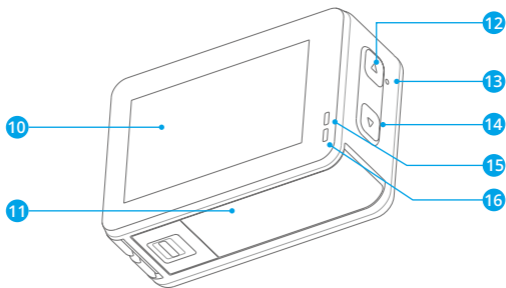


3. Your Brave 7 Action Camera



- | | |
|--------------------------------|-------------------------|
| ① Power/Shutter/Confirm Button | ⑥ Wifi Indicator |
| ② Working Indicator | ⑦ Speaker |
| ③ Front Screen | ⑧ USB/External Mic Port |
| ④ Lens | ⑨ Micro SD Card Slot |
| ⑤ Microphone | |





10 Touchscreen

11 Battery Cover

12 Up Button

13 Voice Control Microphone

14 Down Button

15 Charging Indicator

16 Working Indicator

4. First Use

4.1 Unboxing

Open the packing box along the dotted line, then take the Brave 7 action camera together with its accessories out of the packing box.



- 1 Open the packing box along the dotted line



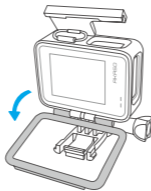
- 2 Take out the Brave 7 action camera and its accessories

4.2 Take the Camera out of the Camera Frame

First, pull up the camera frame's buckle as indicated by the arrow to release the latch and open the door. Then, take the camera out of the camera frame.

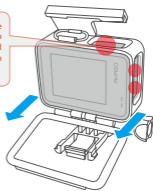


- 1 Pull up the camera frame's buckle



- 2 Open the camera frame's door

While removing the camera, be sure to hold its buttons and gently push it out to avoid it getting stuck.

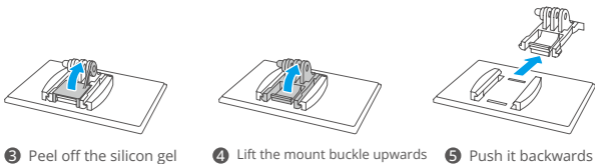
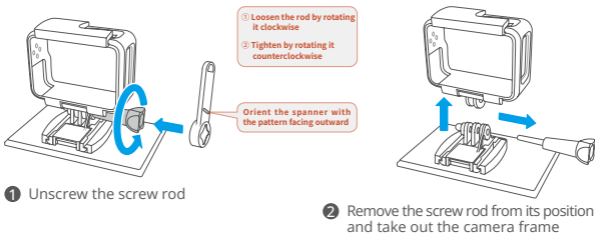


- 3 Take the camera out of the camera frame



4.3 Detach the Camera Frame from the Packing Box

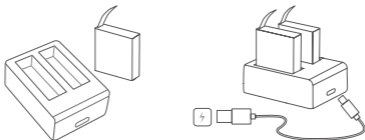
First, turn the screw rod counterclockwise, using your hand or the included spanner. After removing the rod, take the camera frame out of the box. Then, remove the silicon gel from the camera frame. Finally, lift the mount buckle and slide it back to release it from its position.



4.4 Charge the Battery Separately

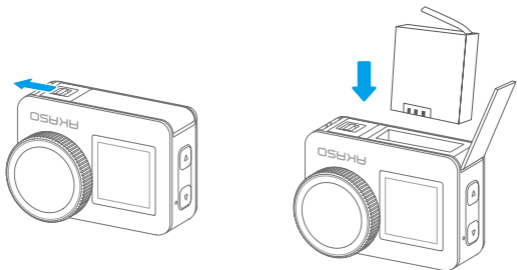
Connect the battery charger to a USB outlet, then insert the battery.

Note: The battery charger indicator will appear red while charging and blue when fully charged.



4.5 Install the Micro SD card

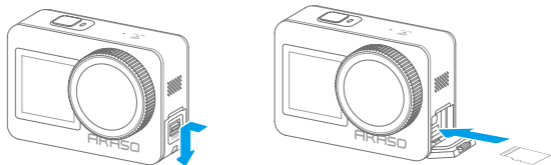
Press the buckle of the battery cover to open it, then place the battery into its slot and close the battery cover. To remove the battery, pull the battery strip.



4.6 Install the Micro SD Card

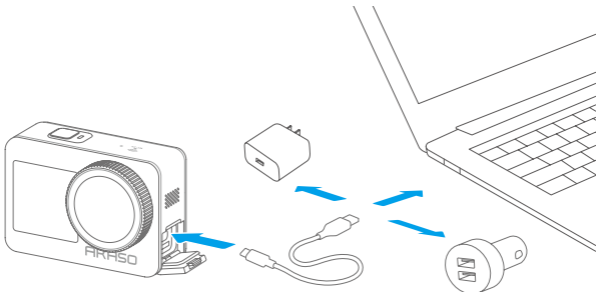
First press the charging cover to reveal the memory card slot, then insert the memory card in the orientation shown and close the cover.

Note: Be sure to turn off the camera before installation.



4.7 Charge the Battery in the Camera

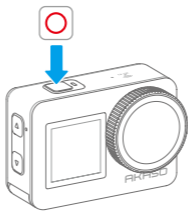
Connect the camera to a USB adapter or computer using the USB cable. Once fully charged, disconnect the cable and ensure the charging cover is securely fastened.



4.8 Power on the Camera

Press and hold the Power button for 3 seconds to turn on the Brave 7 action camera.

Note: Ensure all the camera covers are securely closed before powering it on.



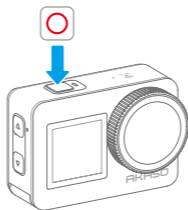
5. Getting Started

5.1 Operation Instructions

(1) Powering On and Off

Powering On: While the camera is off, press and hold the Power button to turn it on.

Powering Off: While the camera is on, press and hold the Power button to turn it off.



(2) Preview Screen



- ① SD Card Capacity
- ② Remaining Card Capacity
- ③ Preview Screen
- ④ Audio Recording Status
- ⑤ Current Shooting Mode
- ⑥ Battery Level
- ⑦ Zoom
- ⑧ Resolution



(3) Using the Shutter Button

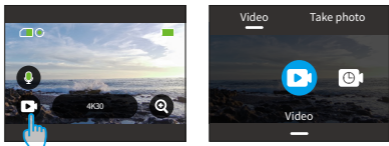
In Photo or Video mode, press the Shutter button to capture photos or start video recording. To stop recording in Video mode, press the Shutter button again.



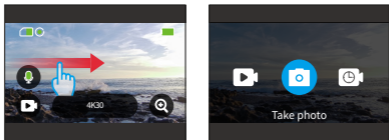
(4) Quickly Switching Modes

There are 3 ways to switch modes.

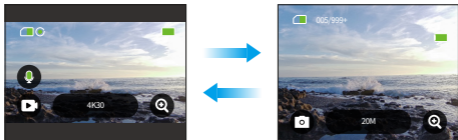
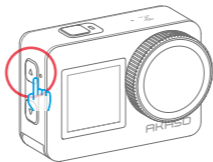
Method 1: On the preview screen, tap the Mode icon to access the mode menu, choose "Video" or "Take photo", and swipe left or right to select a desired shooting mode from the available options, then swipe up to return.



Method 2: On the preview screen, swipe right to access the mode menu, and swipe left or right to select a desired shooting mode from the available options, then swipe up to return.



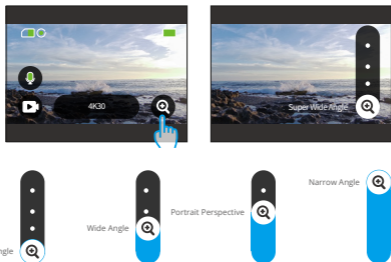
Method 3: On the preview screen, press and hold the Up button for 3 seconds to access the mode menu, then press and hold the Up button again to toggle among the shooting modes.



(5) Zooming in or out

Zoom in or out for a perfect viewing angle. Options include: Super Wide Angle, Wide Angle, Portrait Perspective, and Narrow Angle. There are 2 ways to use the zoom feature.

Method 1: On the preview screen, tap and drag the "+" icon up or down to zoom in or out.



Method 2: On the preview screen, press the Up button to zoom in, and press the Down button to zoom out.



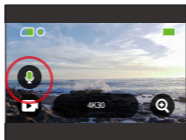
※ The zoom feature is unavailable in HyperLapse Video mode.

(6) Video Sound

Turn the video sound feature on or off. When disabled, the camera will record videos without audio.

On the preview, tap the microphone icon to turn the video sound feature on or off.

Tip: The microphone icon will turn red when Video Sound is enabled, and turn white when disabled; You can also turn this feature on or off by tapping the "Video Sound" option on the Universal screen.



Note: The camera does not record sound when it's in the waterproof case.

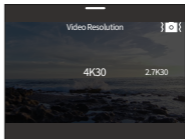
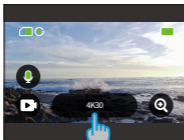
(7) Album Access

Swipe left from the preview screen to enter the playback screen, and tap the icon in the upper left corner to access the album.





(8) Setting Resolution

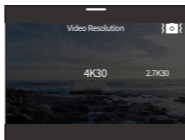
To configure resolution settings, tap the resolution icon at the bottom of to access the resolution settings screen, then swipe left or right to choose the desired resolution. After the configuration is complete, swipe down to exit.



(9) Image Stabilization

Configure the image stabilization within the resolution settings. To turn Image Stabilization on or off, simply tap the image stabilization icon.

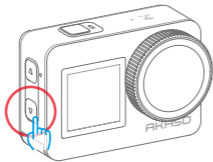
Tip: A blue icon  means Image Stabilization is active, while a white one  means it's inactive. To go back to the preview screen, simply swipe down.



Note: Image Stabilization is available only in Video mode.

(10) Switching Screens

On the preview screen, press and hold the Down button for 3 seconds to toggle between front and touch screens.



※ The touchscreen can't be operated when using the front screen.

5.2 Quick Operation Guide



1. Swipe right to access the mode menu

On the preview screen, swipe right to enter the mode menu. Swipe left or right to select your desired shooting mode.

2. Swipe left to access the playback screen

Swipe left from the preview screen to enter the playback screen. Tap the Square icon in the upper left corner to enter the album screen.

3. Swipe up to access the Video / Photo setting

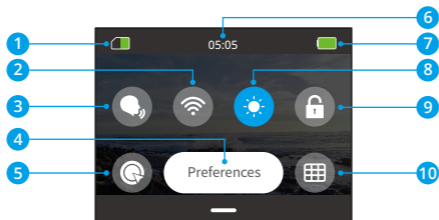
Swipe up to navigate to the video or photo settings screen.

4. Swipe down to access the quick menu

Simply swipe down to open the quick menu.

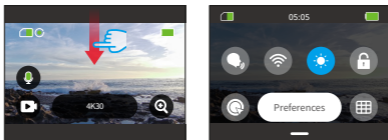


5.3 Quick Menu





- | | |
|---------------------------|---------------------|
| 1 Remaining Card Capacity | 6 Time |
| 2 Wifi | 7 Battery Level |
| 3 Voice Control | 8 Screen Brightness |
| 4 Preferences | 9 Screen Lock |
| 5 One Key Fast Shooting | 10 Grid |

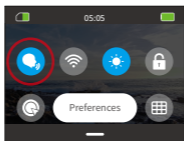
You can access the quick menu by swiping down from the preview screen.



(1) Voice Control

Voice Control offers hands-free operation using supported voice commands. With Voice Control enabled, you can issue any supported voice command to the camera. The camera will respond to the given voice commands and execute various functions. For a comprehensive list of voice commands, see the section **System settings**→**General Settings**→**Voice Command** or check it through **Preferences**→**General Settings**→**Voice Command** on the camera.

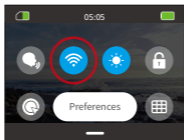
Tap the Voice Control icon in the quick menu to toggle this feature. A blue icon  indicates it's active; a gray one  means it's off.



(2) Wifi

The built-in Wifi connects the camera to the AKASO GO app, facilitating file downloads. More information can be found in the section: **App Download & Wifi Connection**→**Camera Wifi**.

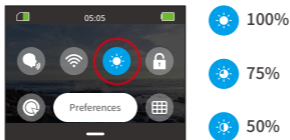
To turn Wifi on or off, simply tap the Wifi icon. The Wifi icon turns blue  when activated and gray  when it's off.



※ If the camera's Wifi is activated but not linked to the app within 3 minutes, it will auto-disable. Re-activate the camera's Wifi to reconnect to the app.

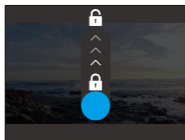
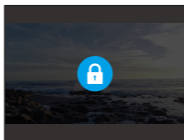
(3) Screen Brightness

Modify screen brightness by tapping its icon in the quick menu. Brightness levels range from 50% to 100%.



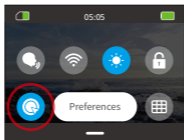
(4) Screen Lock

This feature ensures the camera remains locked—ideal for underwater scenarios. Tap the Lock icon in the quick menu to engage this feature. To unlock, tap the Lock icon and swipe the slider upwards.



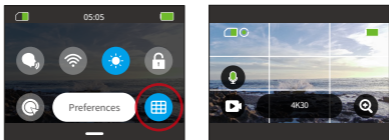
(5) One Key Fast Shooting

When enabled, the camera will automatically turn on and start recording as soon as you press the Shutter button in the power-off state. To stop recording, simply press the Shutter button again. The camera will then save the video file and power off.



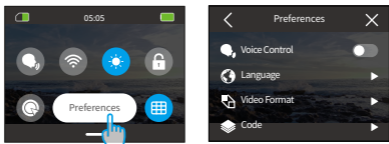
(6) Grid

The grid feature can enhance video quality by helping you properly compose shots and select optimal viewing angles.



(7) Preferences

Access the preferences settings screen by tapping the "Preferences" option on the quick menu.



(8) Exiting the Quick Menu

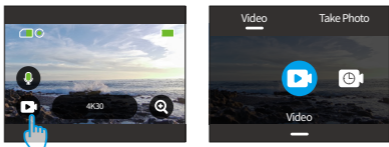
Swipe up from the quick menu to return to the preview screen.

6. Video

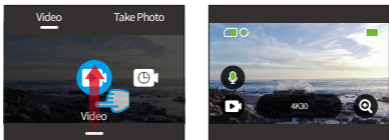
6.1 Video Modes

This camera boasts a variety of video modes: **Video**, **Timelapse Video**, **Hyper-Lapse Video**, and **Slow Motion Video**.

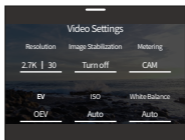
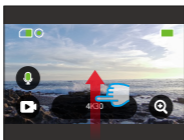
- ① To choose a desired video mode, tap the Mode icon in the bottom left corner to enter the mode menu, then choose "Video", and swipe left or right to navigate among the available options.



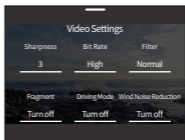
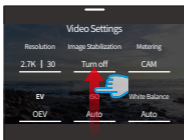
- ② Once you've selected your mode, either tap and swipe up at the screen's bottom to return to the preview screen or wait 5 seconds for the camera to automatically transition to the chosen mode.



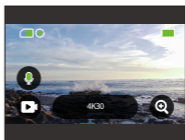
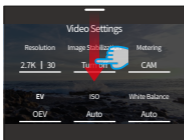
- ③ From the preview screen, tap the bottom of the screen and swipe up to access the video settings.



- ④ On the video settings screen, swipe up for additional settings. Different modes offer varied settings; for details, refer to the section: Video Settings Menu.



- ⑤ After completing the setup, swipe down to return to the preview screen.

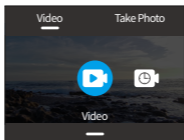


(1) Video (default)

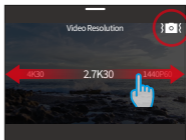
The camera is in Video mode by default when turned on.

In this mode, press the Shutter button to record normal video at the preset resolution and frame rate.

- ① Choose “Video” to access the default Video mode.



- ② Tap the “Resolution” icon to access the quick menu and adjust the following settings.



***Resolution/Frame rate:** Swipe left or right to select your preferred resolution.

***Image Stabilization:** Tap the image stabilization icon to turn this feature on or off.

Note: Image Stabilization is available only in Video mode.

- ③ Swipe up to access additional settings for Resolution, Frame Rate, Image Stabilization, Filter, and more (see **Video Settings Menu**). After completing the setup, tap the bottom of the screen and swipe up to return to Video mode.

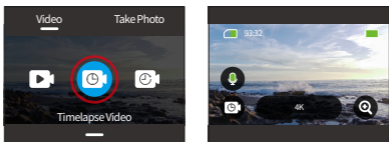
(2) Timelapse Video

Timelapse Video condenses longer events into brief clips by capturing frames at designated intervals. For example, recording a 20-minute span at a 2-second interval

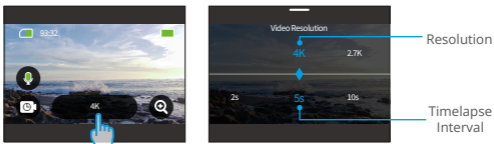
produces a 20-second fast-motion video, whereas a 10-second interval results in a 4-second fast-motion clip.

Tip: The video length varies based on the set interval.

- ① Choose “Timelapse Video” to enter Timelapse Video mode.



- ② Tap the “Resolution” icon to access the quick menu and tailor your desired settings for creating a captivating timelapse video.



***Resolution:** 4K/2.7K/1080P/1440P

Swipe left or right to select your preferred resolution.

***Timelapse Interval:** 2s/5s (default) /10s/30s/1 min/2min/5min/10min/30min/1h

Swipe left or right to select your preferred timelapse interval.

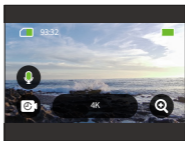
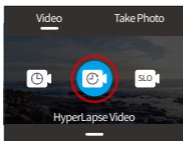
- ③ Swipe up to access additional video settings for Resolution, Frame Rate, Timelapse Interval, Filter, and more (see **Video Settings Menu**). After completing the setup, tap the bottom of the screen and swipe up to return to Timelapse Video mode.

(3) HyperLapse Video

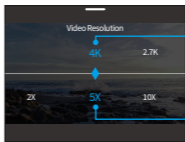
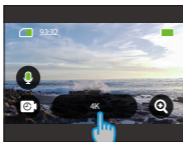
The HyperLapse Video mode enables the camera to produce steady and fluid fast-motion videos, seemingly faster than real-time. This mode is perfect for capturing dynamic scenes.

For instance, a 6-minute video captured at a 2X shutter speed results in a 3-minute fast-motion video, while using a 10X shutter speed gives a 36-second fast-motion video.

- ① Choose “HyperLapse Video” to activate the HyperLapse Video mode.



- ② Tap the “Resolution” icon to access the quick menu and adjust the following settings.



***Resolution:** Swipe left or right to select your preferred resolution.

***Hyperlapse Speed:** Swipe left or right to choose from the available options.

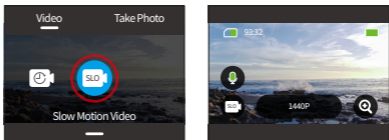
- ③ Swipe up to access additional video settings for Resolution, HyperLapse Speed, Filter, and more (see **Video Settings Menu**). After completing the setup, tap the bottom of the screen and swipe up to return to HyperLapse Video mode.

(4) Slow Motion Video

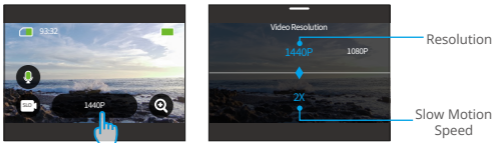
The Slow Motion Video mode allows the camera to capture footage at your chosen resolution and slow motion speed, but it saves the video at a playback rate of 30 fps. This ensures that on playback, the video displays in a captivating slow-motion effect.

For instance, a 10-second clip shot at 720P 4X results in a 40-second video played at 720P30FPS. Essentially, the video is played four times slower, making this mode perfect for capturing fast-moving scenes.

- ① Choose “Slow Motion Video” to activate the Slow Motion Video mode.



- ② Tap the “Resolution” icon to access the quick menu and adjust the following settings.



***Resolution:** Swipe left or right to select your preferred resolution.

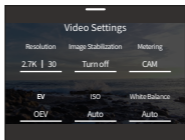
***Slow Motion Speed:** Swipe left or right to select the desired speed.

- ③ Swipe up to access additional video settings for Resolution, Slow Motion Speed, Filter, and more (see **Video Settings Menu**). After completing the setup, tap the bottom of the screen and swipe up to return to Slow Motion Video mode.

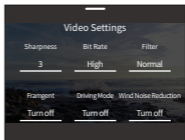
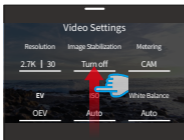
6.2 Video Settings

Customize your settings for an engaging video experience.

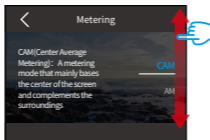
- ① In Video mode, swipe up to bring up the video settings screen.



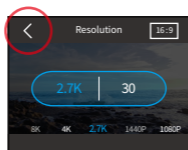
- ② Within the Video Settings, you can explore a wide range of configuration options by scrolling.



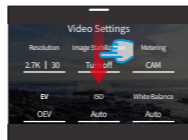
- ③ On each settings screen, swipe up or down to select a desired setting.



- ④ Once you've adjusted your settings, tap the "<" icon in the upper left to save your modifications and return to the Video Settings screen.



- ⑤ To go back to the preview screen, simply swipe down.



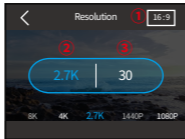
(1) Resolution

The camera is capable of recording videos in resolutions up to 4K60FPS. While higher resolutions yield clearer and more detailed footage owing to the increased pixel count, they also produce larger file sizes.

- ① To adjust the resolution, first ensure the camera is set to Video mode. Then, swipe up to access the video settings interface. Select the “Resolution” option to proceed to its settings.



- ② Swipe left or right to choose from the available options.



- ① **Aspect ratio:** 16:9/4:3
- ② **Resolution:** 4K/2.7K/1080P/720P/1440P
- ③ **Frame rate:** The frame rate varies based on the video format.

•NTSC: 240/120/60/30

•PAL: 200/100/50/25

- ※ The 16:9 aspect ratio is available only in 4K, 2.7K, 1080P, or 720P, and the 4:3 aspect ratio in 1440P.

(2) Timelapse Interval

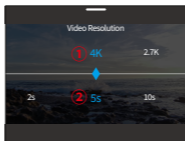
Set the interval at which the camera captures a scene in Timelapse Video mode. The camera will capture scenes at the predefined interval and seamlessly compiles them into a video.

For instance, if the timelapse interval is set to “5s”, the camera will record a scene every 5 seconds, converting longer footage into a short video. This mode is ideal for capturing mesmerizing transitions like sunrises, sunsets, blossoming flowers, and more.

- ① To adjust the Timelapse Interval, first ensure the camera is in Timelapse Video mode. Then tap the “Resolution” icon to access its settings.



- ② Select a desired timelapse interval from the available options.

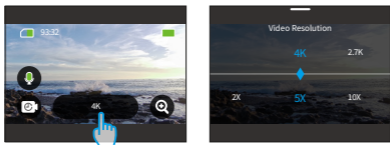


- ① **Resolution:** 4K/2.7K/1080P/1440P
 - ② **Timelapse Interval:** 2s/5s (default)/10s/30s/1min/2min/5min/10min/30min/1h
- ※ This option is available only in Timelapse Video mode.

(3) HyperLapse Speed

HyperLapse Speed indicates the rate by which the video is sped up.

- ① To adjust the HyperLapse speed, first ensure the camera is in HyperLapse Video mode. Then, tap the “Resolution” icon to access its settings.



- ② Select your preferred HyperLapse speed from the available options.

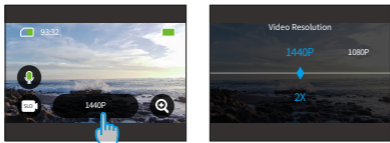


- ① **Resolution:** 4K/2.7K/1080P/1440P
- ② **HyperLapse Speed:** 30X/15X/10X/5X(default)/2X
- ※ This option is available only in HyperLapse Video mode.

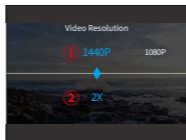
(4) Slow Motion Speed

Slow Motion Speed indicates the rate by which the video is slowed down.

- ① To adjust the slow motion speed settings, first ensure the camera is in Slow Motion Video mode. Then, tap on the “Resolution” icon to access its settings.



- ② Select your preferred slow motion speed from the available options.



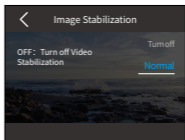
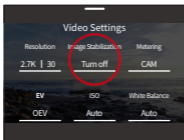
- ① **Resolution:** 1080P/720P/1440P
- ② **Slow Motion Speed:** 8X/4X/2X(default)
- ※ This option is available only in Slow Motion Video mode.

(5) Image Stabilization

Electronic Image Stabilization (EIS4.0) can efficiently smooth out the lens shakes, resulting in smooth and clear videos. This feature is ideal for use in capturing scenes involving activities like riding, skating, and handheld use.

To adjust the Image Stabilization settings, simply tap this option.

Options: Turn on / Turn off (default)



※ Image Stabilization is available only in Video mode.

(6) Metering

The Brave 7 action camera offers diverse metering modes to optimize your shot based on different scenes. Choose from five distinct modes:

CAM (Central Average Metering): Prioritizes the scene's center but also considers surrounding areas. Best for scenes with uniform lighting conditions.

AM (Average Meter Metering): Sometimes referred to as matrix metering, this mode evaluates the entire scene's brightness, ensuring well-balanced exposure and avoiding overexposure, especially in evenly lit settings.

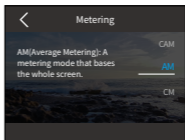
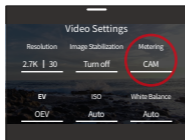
CM (Central Metering): Emphasizes the scene's center, making it ideal for selfies or close-up shots, like flowers.

SM (Spot Metering): Targets a specific spot in the scene to determine exposure, perfect for detailed close-ups.

AFM (AI Facial Metering): A smart mode that adjusts exposure based on detected facial features, enhancing selfies.

To change Metering settings, tap the “Metering” option to access its settings screen.

Options: CAM (default) / AM / CM / SM / AFM.

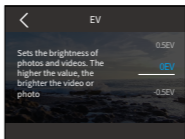
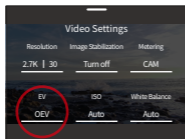


(7) EV

EV (Exposure Value) lets you adjust the brightness of your photos and videos. A higher EV value creates a brighter image, while a lower value results in a darker image.

To change EV settings, tap the “EV” option to access its settings screen.

Options: 3.0/2.5/2.0/1.5/1.0/0.5/0 (default)/-0.5/-1.0EV/-1.5/-2.0/-2.5/-3.0.

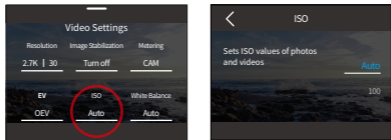


(8) ISO

ISO controls the image sensor's sensitivity to light. A higher ISO increases sensitivity, making it valuable in dimly lit conditions, though it may introduce graininess. A lower ISO is ideal for bright conditions, producing clearer images with reduced noise.

To change ISO settings, tap the "ISO" option to access its settings screen.

Options: Auto (default)/100/200/400/800/1600/3200.

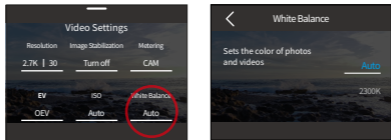


(9) White Balance

White Balance fine-tunes the color temperature of your videos and photos, ensuring optimal color accuracy in both warm and cool lighting conditions.

To change the White Balance settings, tap the "White Balance" option to access its settings screen.

Options: Auto (default) / 2300K / 2800K / 3200K / 4000K / 4500K / 5000K / 55 00K / 6000K / 6500K.

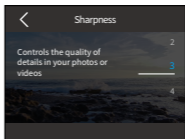
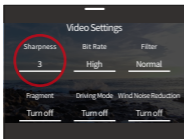


(10) Sharpness

This option allows you to adjust the sharpness of the objects in your scene, which is crucial for capturing the fine details and enhancing the overall quality of your photos or videos.

To change the Sharpness settings, tap the “Sharpness” option to access its settings screen.

Options: 0/1/2/3 (default) /4/5/6.

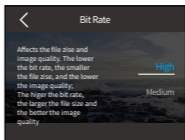
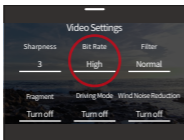


(11) Bit Rate

Bit Rate directly influences both the file size and image quality. A higher bit rate yields superior image quality but results in larger files.

To change the Bit Rate settings, tap the “Bit Rate” option to access its settings screen.

Options: High (default) / Medium / Low.

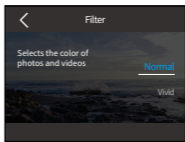
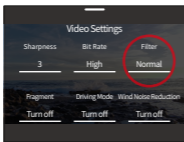


(12) Filter

Choose the tonal quality for your photos or videos to enhance their appeal.

To change the Filter settings, tap the “Filter” option to access its settings screen.

Options: Normal (default) / Vivid / Diving Mode / Snow View / Black & White / Snow / Retro / Negative / Red / Green / Blue.



※ We recommend you set Filter to “Normal” while recording normal videos to avoid reddish or blueish images due to improper settings.

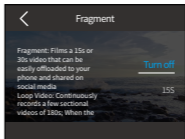
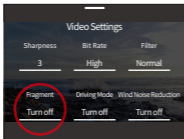
(13) Fragment

Fragment: Set your camera to record videos for 15 or 30 seconds.

180S Loop: The camera will continuously record 180s of videos. When the Micro SD is full, old video files will be overwritten by new ones to ensure continuous recording.

To change the Fragment settings, tap the “Fragment” option to access its settings screen.

Options: Turn off (default) / 15S / 30S / 180S Loop

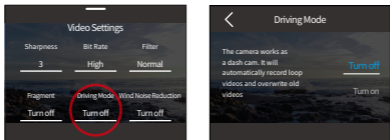


※ This feature is available only in Video mode.

(14) Driving Mode

Driving mode allows the camera to record video and save the video file every 3 minutes by default. Additionally, when the camera powers off, videos will be saved automatically to prevent any loss of footage. The camera also records loop videos in this mode, meaning that when the Micro SD is full, old files will be automatically overwritten by new ones to ensure continuous recording.

Tap the “Driving Mode” option to turn this feature on or off.

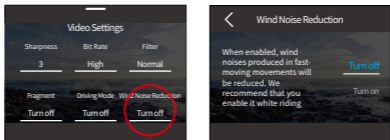


※ This feature is available only in Video mode.

(15) Wind Noise Reduction

Wind Noise Reduction efficiently reduces noise produced during video recording, allowing for better audio quality.

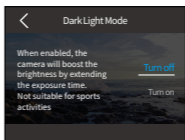
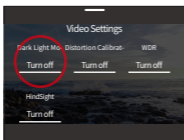
Tap the “Wind Noise Reduction” option to turn this feature on or off.



(16) Dark Light Mode

Dark Light Mode can improve the brightness in images by prolonging the exposure time, making it ideal for use in night scenes. We do not recommend you use this mode while you're doing sports.

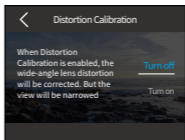
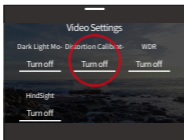
Tap the "Dark Light Mode" option to turn this feature on or off.



(17) Distortion Calibration

Correct the fisheye effect that can occur in wide-angle captures, providing images without distortion.

Tap the "Distortion Calibration" option to turn this feature on or off.

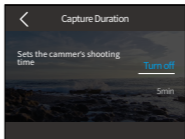
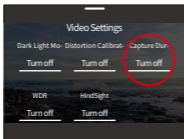


(18) Capture Duration

This option enables you to specify the frequency at which the video frames are captured and compiled. The camera will automatically stop recording after the set duration.

To configure the Capture Duration settings, enter the Timelapse Video mode. Then, swipe up to access the Video Settings screen.

Options: Turn off (default) / 5min / 10min / 5min / 20min / 30min / 60min.

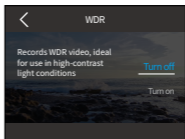
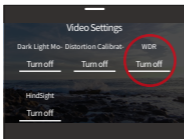


※ This feature is available in Timelapse Video mode only.

(19) WDR

WDR (Wide Dynamic Range) is ideal for use in high-contrast scenes.

Tap the “WDR” option to turn this feature on or off.

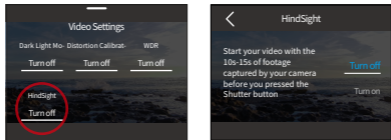


(20) HindSight

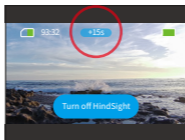
HindSight captures footage up to 15 seconds before you hit the shutter button, ensuring you never miss a moment.

Imagine you're out fishing and want to ensure you don't miss the exciting moment when a fish grabs your bait. With HindSight enabled beforehand, even if you press the shutter after the moment has passed, this feature ensures the moment is saved. The camera will continue recording until you turn off HindSight.

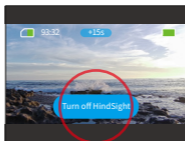
- ① Tap the “HindSight” option to access its settings, then select “Turn on”.



- ② Once activated, return to the preview screen. The camera will begin counting and recording.



- ③ To halt the recording, simply tap “Turn off HindSight”.



Tips:

- ① HindSight is available only in Video mode.
- ② Make sure you have configured the settings you want before starting HindSight; You won't be able to change settings once HindSight is turned on.
- ③ Using this feature will consume more power.

6.3 Video Settings Menu

Menu		Video	Timelapse Video	HyperLapse Video	Slow Motion Video
Resolution	16:9	4K30/ 2.7K30/ 1080P120/ 1080P60/ 1080P30/ 720P240/ 720P120	4K/ 2.7K/ 1080P	4K/ 2.7K/ 1080P	1080P 4X/ 1080P 2X/ 720P 8X/ 720P 4X
	4:3	1440P60/ 1440P30	1440P	1440P	1440P2X
Timelapse Interval	/	2s/5s (default)/10s/30s/1min/2min/5min/10min/30min/1h	/	/	/
Hyperlapse Speed	/	/	/	30X/15X/10X/5X-(default)/2X	/
Image Stabilization	Turn off(default)/Normal	/	/	/	/
Metering	CAM(default)/AM/CM/SM/AFM				
EV	3.0EV/2.5EV/2.0EV/1.5EV/1.0EV/0.5EV/0EV(default)/-0.5EV/-1.0EV/-1.5EV/-2.0EV/-2.5EV/-3.0EV				
ISO	Auto(default)/100/200/400/800/1600/3200/6400				
White Balance	Auto(default)/2300K/2800K/3200K/4000K/4500K/5000K/5500K/6000K/6500K				
Sharpness	0/1/2/3(default)/4/5/6				
Bit Rate	High(default)/Medium/Low				
Filter	Normal (default) /Vivid/Diving mode/Snow View/Black & White /Snow/Retro/Negative/Red/Green/Blue				
Fragment	Turn off(default)/15S/30S/180S Loop	/	/	/	/



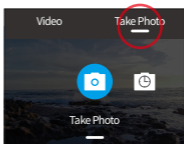
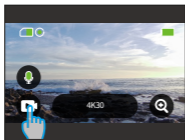
Driving Mode	Turn off (default)/ Turn on	/	/	/
Wind Noise Reduction	Turn off (default)/ Turn on	/	/	/
Dark Light Mode	Turn off (default)/Turn on			
Distortion Calibration	Turn off (default)/Turn on			
Capture Duration	/	Turn off(default)/ 5min/ 10min/15min/ 20min/30min/ 60min	/	/
WDR	Turn off (default)/Turn on			
HindSight	Turn off (default)/ Turn on	/	/	/

7. Photo

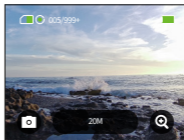
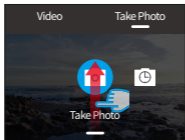
7.1 Photo Modes

Photo modes of this camera include **Photo** and **Timelapse Photo**.

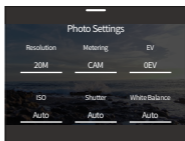
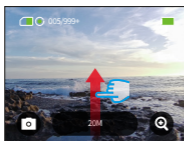
- ① To choose a photo mode, tap the Mode icon in the bottom left corner to enter the mode menu, then choose “Take photo”, and swipe left or right to navigate between the two options.



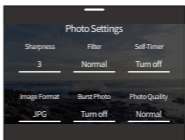
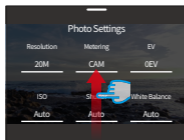
- ② Once you've selected your mode, either tap and swipe up at the screen's bottom to return to the preview screen or wait 5 seconds for the camera to automatically transition to the chosen mode.



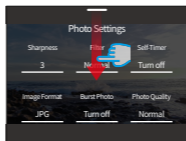
- ③ On the preview screen, tap and swipe up from the bottom to access the photo settings.



- ④ On this screen, swipe up to access more settings tailored to the chosen photo mode. For a detailed list of these settings, refer to the **Photo Settings Menu** section.



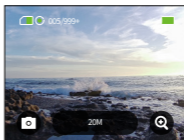
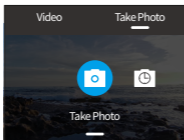
- ⑤ Once you have done configuring, swipe down to return to the preview screen.



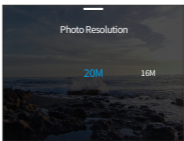
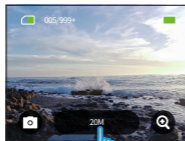
(1) Photo (default)

In Photo mode, press Shutter button to take a photo at the preset photo resolution.

- ① After selecting “Take Photo”, the camera will enter Photo mode.



- ② Tap the “Resolution” option to access the quick menu, and swipe left or right to set the resolution.

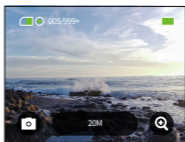
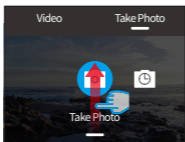


(2) Timelapse Photo

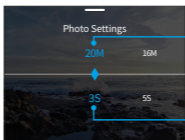
In this mode, when you press the Shutter button, the camera will automatically start the countdown and continuously take photos at set the interval till you press the Shutter button again.

For instance, when you set Timelapse Interval to 5 seconds, and Capture Duration to 5 minutes respectively, then press the Shutter button, the camera will continuously count down 5 seconds to take photos within 5 minutes.

① After tapping "Timelapse Photo", the camera shifts to this mode.



② Swipe left or right to select a desired photo resolution when the camera is in Timelapse Photo mode.



- **Photo Resolution:** 20M/16M/12M/10M/8M

Swipe left or right to select a desired photo resolution.

- **Timelapse Interval:** 3s/5s/10s/30s/1min

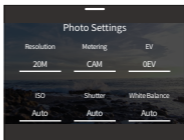
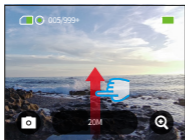
Swipe left or right to select a desired timelapse interval

Note: The Shutter setting cannot be adjusted in Timelapse Photo mode;
Timelapse photos are output in JPG format.

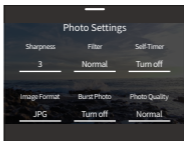
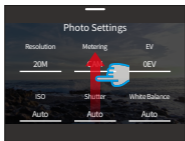
7.2 Photo Settings

Fine-tune your settings to capture the perfect shot.

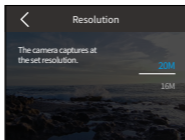
- ① To begin, ensure your camera is in Photo mode, then swipe up to access the Photo Settings screen.



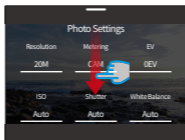
- ② Scroll to explore a wide range of available options.



- ③ Once you've made your desired adjustments, tap the "<" icon at the top left to save your changes and return to the Photo Settings screen.



- ④ Swipe down to go back to the preview screen.

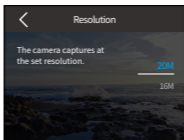


(1) Resolution

This camera is capable of capturing 20MP photos. While higher resolutions yield clearer and more detailed photos owing to the increased pixel count, they also produce larger file sizes.

To adjust the resolution, tap the “Resolution” option to access its settings screen.

Options: 20M(default)/16M/12M/10M/8M.



(2) Metering

This option allows you to select the desired metering mode for different scenes. There are 5 metering modes available for the Brave 7 action camera.

CAM (Central Average Metering): Prioritizes the scene's center but also considers surrounding areas. Best for scenes with uniform lighting conditions.

AM (Average Metering): Sometimes referred to as matrix metering, this mode evaluates the entire scene's brightness, ensuring well-balanced exposure and avoiding overexposure, especially in evenly lit settings.

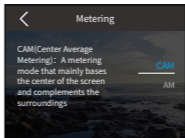
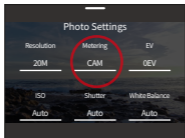
CM (Central Metering): Emphasizes the scene's center, making it ideal for selfies or close-up shots, like flowers.

SM (Spot Metering): Targets a specific spot in the scene to determine exposure, perfect for detailed close-ups.

AFM (AI Facial Metering): A smart mode that adjusts exposure based on detected facial features, enhancing.

To configure the Metering settings, tap on the “Metering” option to access its settings screen.

Options: CAM (default) / AM / CM / SM / AFM.

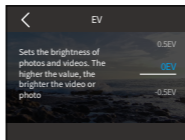
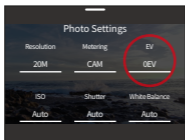


(3) EV

EV (Exposure Value) lets you adjust the brightness of your photos and videos. A higher EV value creates a brighter image, while a lower value results in a darker image.

To configure the EV settings, tap on the “EV” option to access its settings screen.

Options: 3.0EV/2.5EV/2.0EV/1.5EV/1.0EV/0.5EV/0EV(default)/-0.5EV/-1.0EV/-1.5EV/-2.0EV/-2.5EV/-3.0EV.

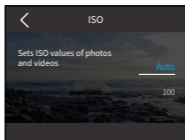
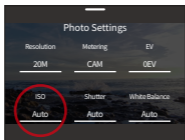


(4) ISO

ISO allows you to adjust the sensitivity of the image sensor to light.

To configure the ISO settings, tap on the “ISO” option to access its settings screen.

Options: Auto (default) / 100 / 200 / 400 / 800 / 1600 / 3200.

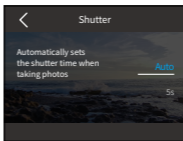
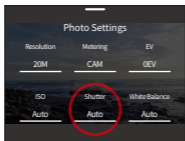


(5) Shutter

Determine the length of time that a shutter remains open. By keeping the shutter open throughout the desired exposure time, the camera can continue recording. This feature is ideal for capturing scenes involving low-light conditions, illuminated subjects, or water elements.

To configure the Shutter settings, tap on the “Shutter” option to access its settings screen.

Options: Auto (default), 5s, 2s, 1/125s, 1/250s, 1/500s, 1/1000s, 1/2000s.



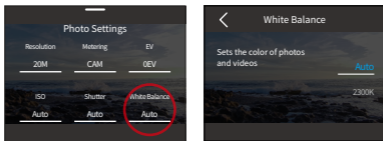
✳ This feature is available in Photo mode only.

(6) White Balance

White Balance fine-tunes the color temperature of your videos and photos, ensuring optimal color accuracy in both warm and cool lighting conditions.

To configure the White Balance settings, tap on the “White Balance” option to access its settings screen.

Options: Auto (default) / 2300K / 2800K / 3200K / 4000K / 4500K / 5000K / 55 00K / 6000K / 6500K.

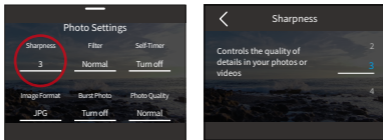


(7) Sharpness

Adjust the sharpness of your scene’s elements to capture fine details, thereby enhancing the overall image or video quality.

To configure the Sharpness settings, tap on the “Sharpness” option to access its settings screen.

Options: 0 / 1 / 2 / 3 (default) / 4 / 5 / 6.

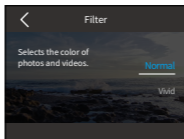
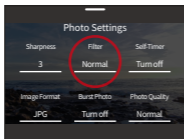


(8) Filter

Choose the tonal quality for your photos or videos to enhance their appeal.

To configure the Filter settings, tap on the "Filter" option to access its settings screen.

Options: Normal (default) / Vivid / Diving Mode / Snow View / Black & White / Snow / Retro / Negative / Red / Green / Blue.



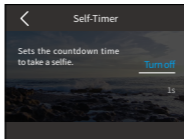
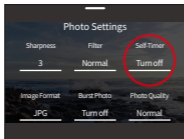
※ To avoid reddish or bluish images due to improper settings, we recommend you set the Filter to "Normal" before capturing photos.

(9) Self-Timer

This option allows you to set the countdown time in Photo mode.

To configure the Self-Timer settings, tap the "Self-Timer" option to access its settings screen.

Options: Turn off (default) / 1s / 3s / 5s / 10s / 30s.



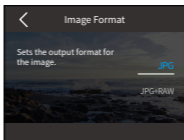
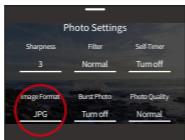
※ Self-Timer is available in Photo mode only.

(10) Image Format

Image Format refers to the output format of a photo. This camera supports two formats: JPG and JPG+RAW.

JPG provides a compressed format that minimizes file size at the expense of some detail. In contrast, RAW maintains the image's full data without any compression, ensuring maximum quality while taking up more storage space than JPG images.

Tap the "Image Format" option to choose from JPG and JPG+RAW.

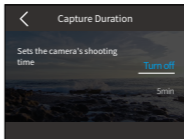


(11) Capture Duration

Choose how long your camera captures in Timelapse Photo mode before automatically stopping. The camera will automatically stop capturing after the set duration.

To configure the capture duration settings, first make sure the camera is in Timelapse Photo mode. Then, swipe up to access the Photo Settings screen. On this screen, tap the "Capture Duration" option to access its settings screen.

Options: Turn off (default) / 5min / 10min / 15min / 20min / 30min / 60min.



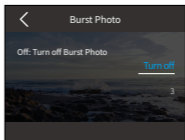
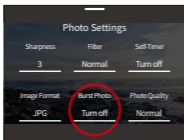
※ This feature is available in Timelapse Photo mode only.

(12) Burst Photo

Burst Photo mode lets you capture up to 8 shots per second with the option to shoot JPG. This setting decides how many consecutive shots the camera captures with a single Shutter press.

To configure the Burst Photo settings, tap on the “Burst Photo” option to access its settings screen.

Options: Turn off (default) / 3 / 5 / 8.



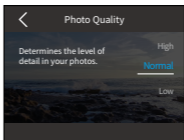
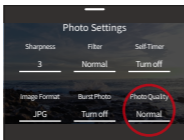
※ Burst Photo is available only in Photo mode. Ensure camera stability throughout the entire burst duration when using this mode.

(13) Photo Quality

Photo quality is of utmost importance when it comes to achieving high image quality. A higher photo quality directly translates to better image quality, often accompanied by larger file sizes.

To configure the Photo Quality settings, tap on the “Photo Quality” option to access its settings screen.

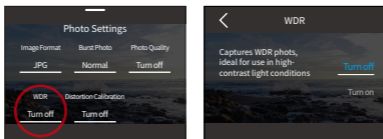
Options: High / Normal (default) / Low



(14) WDR

WDR (Wide Dynamic Range) is ideal for use in high-contrast light conditions.

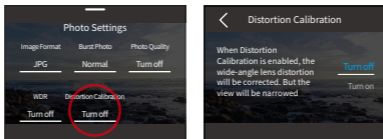
Tap the “WDR” option to turn this feature on or off.



(15) Distortion Calibration

Correct the fisheye effect common in wide-angle captures, providing images without distortion.

Tap the “Distortion Calibration” option to turn this feature on or off.



7.3. Photo Settings Menu

Menu	Photo	Timelapse Photo
Resolution	20M(default)/16M/12M/10M/8M	20M(default)/16M/12M/10M/8M
Metering	CAM(default)/AM/CM/SM/AFM	CAM(default)/AM/CM/SM/AFM
EV	3.0EV/2.5EV/2.0EV/1.5EV/1.0EV/0.5EV/0EV(default)/-0.5EV/-1.0EV/-1.5EV/-2.0EV/-2.5EV/-3.0EV	3.0EV/2.5EV/2.0EV/1.5EV/1.0EV/0.5EV/0EV(default)/-0.5EV/-1.0EV/-1.5EV/-2.0EV/-2.5EV/-3.0EV
ISO	Auto(default)/100/200/400/800/1600/3200	Auto(default)/100/200/400/800/1600/3200
Shutter	Auto(default), 5s, 2s, 1/125s, 1/250s, 1/500s, 1/1000s, and 1/2000s	/
White Balance	Auto(default)/2300K/2800K/3200K/4000K/4500K/5000K/5500K/6000K/6500K	Auto(default)/2300K/2800K/3200K/4000K/4500K/5000K/5500K/6000K/6500K
Sharpness	0/1/2/3(default)/4/5/6	0/1/2/3(default)/4/5/6
Filter	Normal (default) /Vivid/Diving mode/Snow View/Black & White /Snow/Retro/Negative/Red/Green/Blue	Normal (default) /Vivid/Diving mode/Snow View/Black & White /Snow/Retro/Negative/Red/Green/Blue
Self-Timer	Turn off(default)/1s/3s/5s/10s/30s	/
Image Format	JPG(default)/JPG+RAW	JPG(default)/JPG+RAW
Capture Duration	/	Turn off(default)/5min/10min/15min/20min/30min/60min
Burst Photo	Turn off(default)/3/5/8	/
Photo Quality	High/Standard(default)/Low	High/Standard(default)/Low
WDR	Turn off (default)/ Turn on	Turn off (default)/ Turn on
Distortion Calibration	Turn off (default)/ Turn on	Turn off (default)/ Turn on



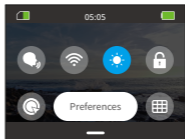
8. System Settings

Dive into the System Settings to adjust your Preferences and General Settings.

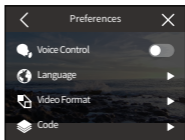
8.1 Preferences

① Setting preferences

A. Ensure the camera is on the preview screen, then swipe down to access the quick menu.



B. Tap the "Preferences" option to access the Preferences settings screen for quick setup.



② Quick Settings Guidance

To exit any screen, tap the "<" icon in the upper left corner.

To save and exit current settings, tap the "<" icon in the upper left corner.

To return to the preview screen, tap the "X" icon in the upper right corner.

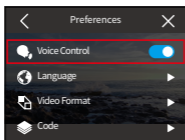


(1) Voice Control

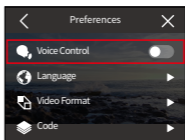
Choose to turn the voice control feature on or off. With Voice Control enabled, you can issue any supported voice command to the camera. The camera will respond to the given voice commands and execute various functions. For a comprehensive list of voice commands, see the section **System settings**→**General Settings**→**Voice Command** or check it through **Preferences**→**General Settings**→**Voice Command** on the camera.

To turn this feature on or off, tap the Voice Control slider.

Tip: You can also enable the voice control feature on the quick menu.



Voice Control On



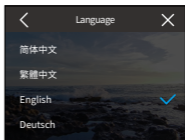
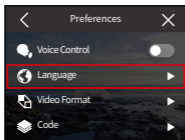
Voice Control Off

(2) Language

Choose the desired system language for your camera interface.

Tap the "Language" option to configure the Language settings.

Options: 简体中文/繁體中文/English/Deutsch/日本語/Français/Español/Italiano/한국어/Русский/Português/Malese/Filipino.



(3) Video Format

Determine your video format preference.

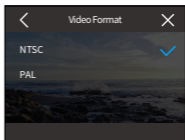
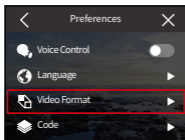
To configure the Format settings, tap on the “Video Format” option to access its settings screen

Options: NTSC(default) / PAL.

※ Resolutions and frames vary based on the video format. For more details, please consult the below information.

NTSC: 4K30\2.7K30\1440P60\1440P30\1080P120\1080P60\1080P30\720P240\720P120

PAL: 4K25\2.7K25\1440P50\1440P25\1080P100\1080P50\1080P25\720P200\720P100

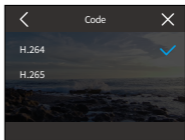
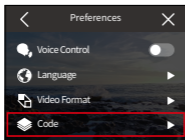


(4) Code

Select between H.265 and H.264 video codecs, each offering different image effects and compression ratios. H.265 videos take up less storage space than H.264 videos due to their more efficient compression algorithms.

To configure the Code settings, tap on the “Code” option to access its settings screen.

Options: H.264(default) / H.265.



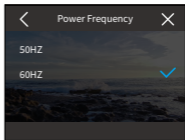
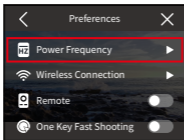
(5) Power Frequency

Power Frequency is also known as the line frequency or mains frequency, it is the frequency of the alternating current (AC) that is used in most electrical power systems around the world. You can set the power frequency to avoid the “water ripples” phenomenon (light waves) while capturing indoors.

If you live in the northeastern area, please set the power frequency to 60Hz, meaning the current changes direction 60 times per second. If you live outside this area, set it to 50Hz.

To configure the Power Frequency settings, tap on the “Power Frequency” option to access its settings screen.

Options: 50HZ(default) / 60HZ.



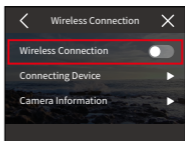
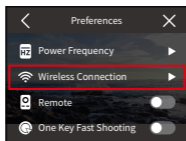
(6) Wireless Connection

Connect your action camera to the AKASO GO app using the camera's built-in Wifi. For a comprehensive guide, refer to the section: [App Download & Wifi Connection](#) → [Camera Wifi](#).

To turn this feature on or off, simply tap on the “Wireless Connection” option to access its settings screen.

① Wireless Connection

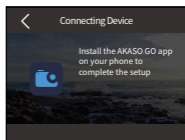
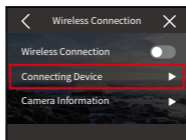
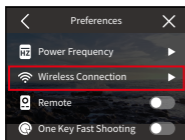
Activate or deactivate Wifi with a simple slide of the switch.



※ If Wifi isn't connected within 3 minutes, it will auto-disconnect. Enable Wifi again to reconnect.

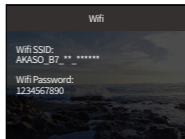
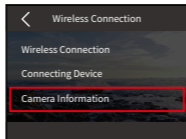
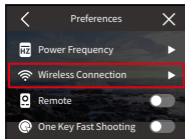
② Connecting Device

This option reminds you to install the AKASO GO app to connect to your camera via Wifi.



③ Camera Information

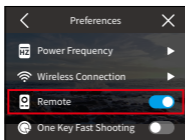
View the Wifi SSID and password here.



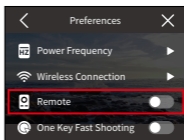
(7) Remote

By enabling Remote, you can pair your camera with the included remote for remote operation.

To turn this feature on or off, simply tap on the “Remote” option to access its settings screen.



Remote On



Remote Off

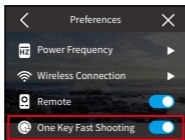
(8) One Key Fast Shooting

With this feature enabled, the camera will automatically turn on and start recording as soon as you press the Shutter button in the power-off state. To stop recording, simply press the Shutter button again. The camera will then save the video file and power off.

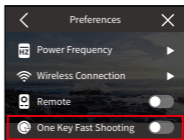
To turn this feature on or off, tap the One Key Fast Shooting slider.

Tip: You can also turn this feature on or off on the quick menu.

Options: Turn off (default) / Turn on.



One Key Fast Shooting On

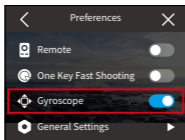


One Key Fast Shooting Off

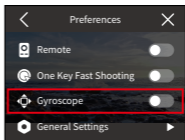
(9) Gyroscope

The camera's built-in 6-axis gyroscope can detect how you hold the camera, allowing for a more enjoyable capture experience. With Gyroscope enabled, the camera intuitively captures vertical shots when held upright, and switches to widescreen when held sideways.

To turn this feature on or off, simply tap on the "Gyroscope" option to access its settings screen.



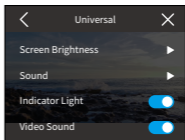
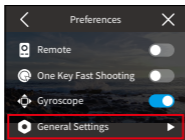
Gyroscope On



Gyroscope Off

8.2 General Settings

Navigate to the General Settings screen to tailor your camera's setup by tapping on the "General Settings" option.

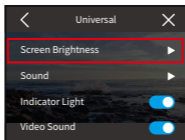


(1) Screen Brightness

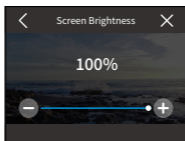
Easily adjust the screen's brightness.

① Access the brightness settings by selecting "Screen Brightness".



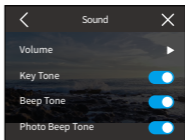
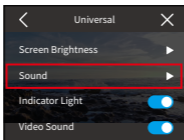


- ② Fine-tune the brightness level between 0% and 100% using the slider or the “+” / “-” icons.



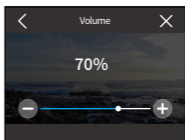
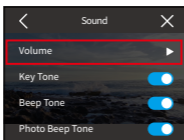
(2) Sound

Customize the camera's volume, key tone, beep tone, and photo beep tone by tapping on the “Sound” option.



① Volume

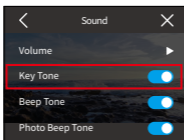
Adjust the overall volume between 0% and 100% by selecting the “Volume” option.



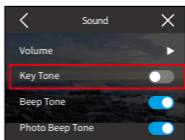
② Key Tone

Key Tone refers to the sound emitted when you press the camera's buttons.

To turn the key tone on or off, tap the Key Tone slider switch.



Key Tone On

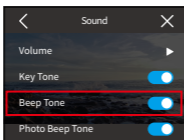


Key Tone Off

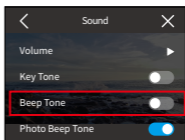
③ Beep Tone

Beep Tone refers to the sound emitted by the camera during operations like powering on / off or starting / stopping recording.

Options: Turn off (default) / Turn on.



Beep Tone On



Beep Tone Off

④ Photo Beep Tone

Photo Beep Tone refers to the sound emitted when the camera takes a photo.

Options: Turn off (default) / Turn on.

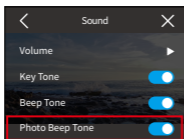


Photo Beep Tone On

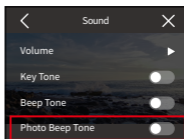
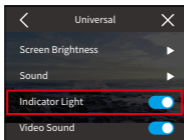


Photo Beep Tone Off

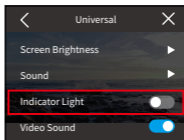
(3) Indicator Light

There are 3 indicators of the Brave 7 action camera: working, charging, and Wif indicators. If you prefer not to have the indicator visible, it can easily be disabled in this setting.

Options: Turn off (default) / Turn on.



Indicator On



Indicator Off

Working Indicator (Blue)

- ① While powering on, it will stay on after quickly flashing twice.
- ② While powering off, it will black out after quickly flashing twice.
- ③ It will be flashing every second while recording video.
- ④ It will be flashing once while capturing photos.

Charging Indicator (Red)

- ① Remains off while not charging.
- ② Remains on while charging.
- ③ Remains off when fully charged.

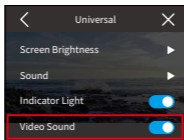
Wifi Indicator (Yellow)

- ① Blacks out when Wifi is disabled.
- ② Flash every second when Wifi is enabled.
- ③ Remains on when connected to the AKASO GO app.

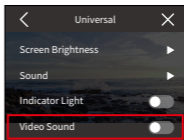
(4) Video Sound

With Video Sound disabled, the camera will record video without audio.

Tap the slide switch to turn Video Sound on or off.



Video Sound On



Video Sound Off

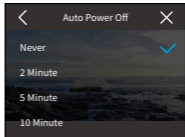
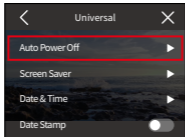
※ This feature is available only in Video mode.

(5) Auto Power Off

Set the duration of inactivity after which the camera automatically powers off. If not operated within the chosen duration, the camera will shut down.

To configure the Auto Power Off settings, tap on the “Auto Power Off” option to access its settings screen.

Options: Never/2 Min/5 Min/ 10 Min.

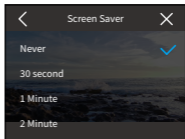
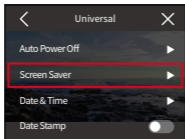


(6) Screen Saver

Determine when the camera's display should go dormant to conserve battery. If you need the screen back on, just tap it or press any button.

To configure the Screen Saver settings, tap on the “Screen Saver” option to access its settings screen.

Options: Never /30 Sec /1 Min /2 Min /5 Min.

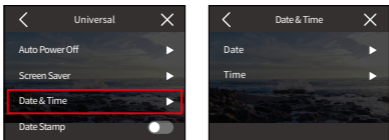


※ Even with the display screen off, you can still press the camera's buttons and use the voice control feature. The camera also continues to record even when the screen is off.

(7) Date & Time

Set your camera's date and time manually or sync it with your phone through the AKASO GO app.

Tap on the "Date & Time" option to access its settings.

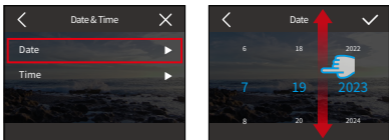


① Date

You can set the camera's date by accessing its settings screen.

A. Tap "Date" to access its settings screen.

B. Swipe up or down to choose from the settings, then tap the "✓" icon in the upper right corner. To exit, use the "<" icon in the upper left corner.

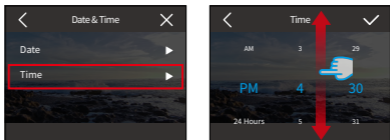


② Time

You can set the camera's time by accessing its settings screen.

A. Tap "Time" to access its settings screen.

B. Swipe up or down to choose from the settings, then tap the "✓" icon in the upper right corner. To exit, use the "<" icon in the upper left corner.

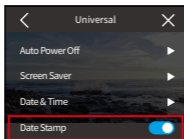


※ The camera supports both 12-hour and 24-hour formats.

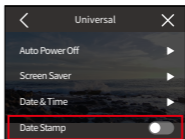
(8) Date Stamp

When Date Stamp is enabled, a time and date watermark will be added to the video or photo.

To turn this feature on or off, simply tap on the “Date Stamp” option to access its settings screen.



Date Stamp On

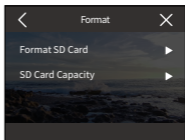
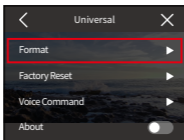


Date Stamp Off

(9) Format

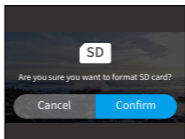
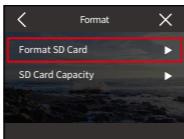
Erase all data on your memory card. Formatting will delete all the media files stored in the memory card. Ensure important files are saved elsewhere before proceeding.

To format the SD card, you can tap on the “Format” option to access the formatting screen.



① Format SD Card

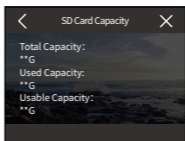
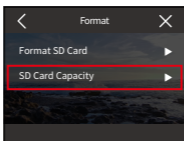
Tap "Format SD Card", then confirm or cancel the formatting of the SD card.



Warm tip: Always format new SD cards in the camera before use.

② SD Card Capacity

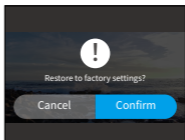
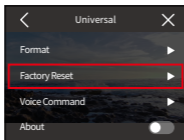
To check the total, used, and remaining capacity of the SD card, tap the "SD Card Capacity" option.



(10) Factory Reset

Reset all settings to their default values, and disconnect any current connection.

Tap "Factory Reset", then confirm or cancel the factory reset.



(11) Voice Command

Check all the supported voice commands under this setting. The camera will respond to the given voice commands and execute various functions. For example, saying "AKASO Power Off" to the camera will prompt it to turn off.

No.	Voice Commands	Descriptions
1	AKASO Video Start	Brave 7 action camera starts recording video.
2	AKASO Stop Video	Brave 7 action camera stops recording video.
3	AKASO Take Photo	Brave 7 action camera takes a photo.
4	AKASO Power Off	Brave 7 action camera shuts down.

Tips:

1. This camera only supports voice commands in Chinese, English, German, Spanish, Italian, French, and Japanese. It will only respond to English voice commands if the system language is not set to one of the supported languages.
2. Stop video recording before giving a new command.
3. Speak clearly and naturally at a normal speed. There is no need to slow down.
4. Emphasize the end of the command.
5. Performance might vary with distance, environmental noise, and wind. Ensure the device is kept clean and clear of debris.
6. Voice commands are most effective within 3 meters.

(12) About

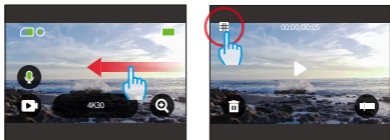
Tap the "About" option to view details about your camera, including brand, model, and firmware.

9. Album

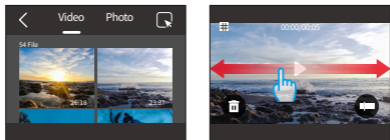
Album allows you to view all the video and photo files stored on the memory card.

9.1 Album Access

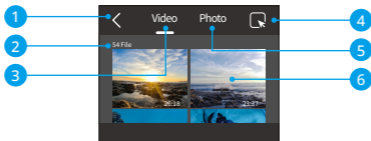
- (1) Swipe left from the preview screen to enter the playback screen, then tap the Square icon in the upper left corner to access the album screen.



- (2) Tap "Video" or "Photo" to enter the video or photo set for file playback.



9.2 Album Interface



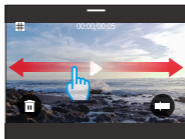
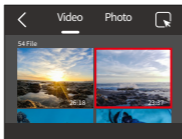
- ① **Exit Album:** Exit the album and go back to the preview screen.
- ② **File Quantity:** The number of total files of the current video or photo set.
- ③ **Video Set:** Swipe up to view more video files.
- ④ **Delete File:** Delete the selected file.
- ⑤ **Photo Set:** Swipe up to view more photo files.
- ⑥ **File Thumbnail:** Tap it to playback the file in full view.

9.3 Video Playback

(1) Playback Videos

- ① From the album screen, tap "Video" to enter the video set.
- ② Scroll through the video files, and tap one file to see it in full-screen view.
- ③ Tap the playback icon, and it will play.

Tip: On the current file screen, you can navigate among videos by swiping left or right.



(2) Video Screen



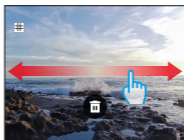
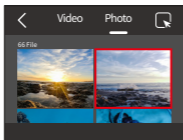
- ① Return to the album screen
- ② Delete the current file
- ③ Swipe down to return to the preview screen
- ④ Current playback time
- ⑤ Play/Pause
- ⑥ Playback progress bar

9.4 Photo Playback

(1) Playback Photos

- ① From the album screen, tap "Photo" to enter the photo set.
- ② Scroll through the photo files, and tap one file to see it in full-screen view.
- ③ Tap the playback icon, and it will play.

Tip: On the current file screen, you can navigate among photos by swiping left or right.



(2) Photo Screen



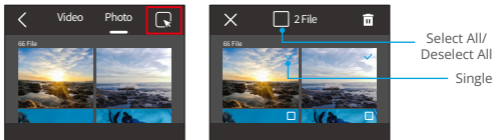
- ① Return to the album screen
- ② Swipe down to return to the preview screen
- ③ Delete current file


9.5 File Deletion

(1) Delete Files from the Album Screen

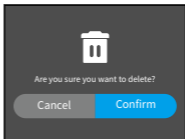
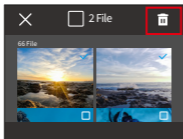
- ① From the album screen, tap the Square icon in the upper right corner to select file (s) you want to delete.

Tip: You can tap the icon at the top to select all files for deletion. Additionally, individually select the files you wish to delete, and it will display the number of selected files.




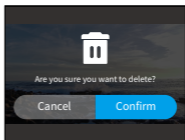
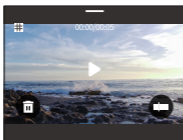
- ② Then tap on the Delete icon  in the upper right corner and select the "Confirm" option to complete the deletion of the selected file or files.






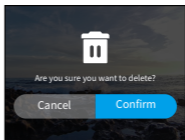
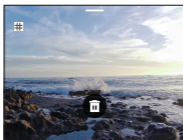
(2) Delete Files on the Video Screen

On the Video screen, tap the Delete icon  in the bottom left corner of the current video file, and select the “Confirm” option to complete the deletion of the selected file.



(3) Delete Files on the Photo Screen

On the Photo screen, tap on the Delete icon  at the bottom of the current photo, and select the “Confirm” option to complete the deletion of the selected file.



10. Data Transmission

10.1 Transferring Files to a Computer

Method 1: Transferring via a card reader

- ① Ensure the camera is turned off, then carefully remove the SD card.
- ② Insert the SD card into a card reader.
- ③ Connect the card reader to your computer's USB port.
- ④ Copy files to your computer for playback or editing.

Method 2: Transferring via a data cable

- ① Connect your camera to the computer using a USB data cable.
 - ② When prompted, select "USB Camera" as your connection preference.
 - ③ Activate your camera as a Webcam. (**Note:** Some computers may require enabling the "USB Video Device" setting first.)
- ※ As a Webcam, the camera's default recording resolution is 4K at 30FPS. Adjust resolution settings using a Webcam tool on your computer.

10.2 Webcam Mode

Webcam mode allows you to use the Brave 7 as a Webcam. Once activated, it can capture and transmit live video or images in real-time over the internet, ideal for video conferencing, online streaming, and live chatting. To do this, follow the steps below:

- ① Connect your camera to the computer using a USB data cable.
 - ② When prompted, select "USB Camera" as your connection preference.
 - ③ Activate your camera as a Webcam. (**Note:** Some computers may require enabling the "USB Video Device" setting first.)
- ※ As a Webcam, the camera's default recording resolution is 4K at 30FPS. Adjust resolution settings using a Webcam tool on your computer.
- ※ Ensure you're using a USB data cable, not just a charging cable, to enable data transfer.



11. App Download & Wifi Connection

11.1 Camera Wifi

The camera Wifi works to connect the camera to the AKASO GO app to preview or transfer files.

※ The camera Wifi will not be connected to the internet.

11.2 Features of the AKASO GO App

- (1) View the camera's status on your phone.
- (2) Remotely control the camera with your phone.
- (3) Preview videos and photos stored on the SD card.
- (4) Edit or share videos or photos captured by your camera.
- (5) Update the camera's firmware.

Tips:

- ① Ensure the camera's Wifi is active before connecting to the AKASO GO app.
- ② The camera cannot be operated in Wifi mode. Exiting the Wifi screen disconnects the camera Wifi automatically.
- ③ While connecting the camera Wifi, a "No Internet Connection" or "Weak Security" notification might appear since the phone's data is paused. Disconnect the app to restore internet access.

11.3 Download the AKASO GO App

To sync your camera with the app, download the AKASO GO app from the App Store (iOS) or Google Play (Android) by searching for "AKASO GO". Alternatively, use the provided QR code:





AKASO GO



iOS

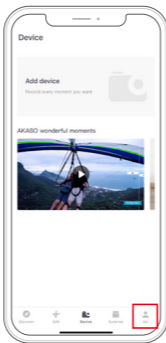


Android

Access all app features by registering and logging into your AKASO GO account.

11.4 Create An Account for the AKASO GO App

(1) Open the AKASO GO app, then tap “My” in the bottom right corner to enter the registration page.



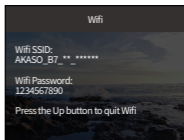
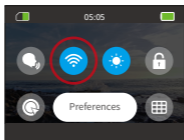
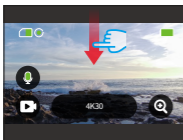
- (2) Tap “Join Now” to enter the required information for login, then tap “Join”. Now you successfully create the app account.



11.5 Connect to the AKASO GO App via Wifi

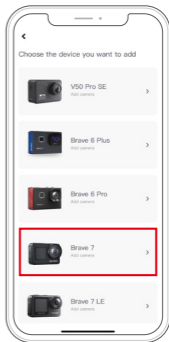
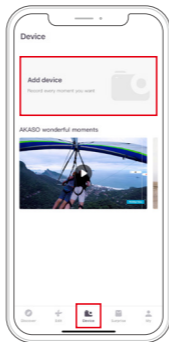
Follow the instructions below to connect your camera to the AKASO GO app.

- (1) Tap the Wifi icon on the quick menu to enable Wifi. The Wifi details will be displayed.



- (2) Open the AKASO GO app on your smartphone, then tap "Device" → "Add Device" to choose Brave 7 from the options for connection.

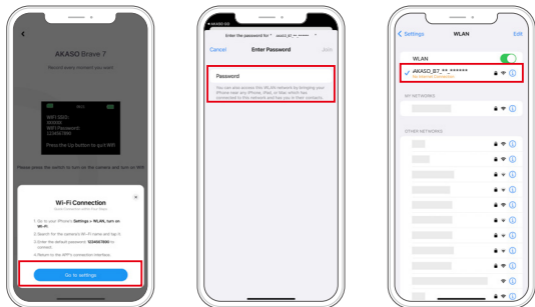
Note: The camera will prompt you to allow the camera to access your phone's Wifi and storage for successful connection.



- (3) Tick "The above operation has been confirmed", and tap "Live Preview". You will be prompted to connect to the camera Wifi.



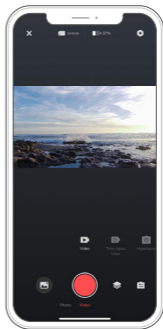
- (4) Follow the instructions to access your phone's settings page → WLAN, then find the camera's Wifi SSID, and tap it to enter the default password: 1234567890 for connection.



Note: After Wifi is successfully connected, the app will prompt you that “The WLAN network does not appear to be connected to the internet. Do you want to keep using WLAN?”, please choose “Keep Trying WLAN”.

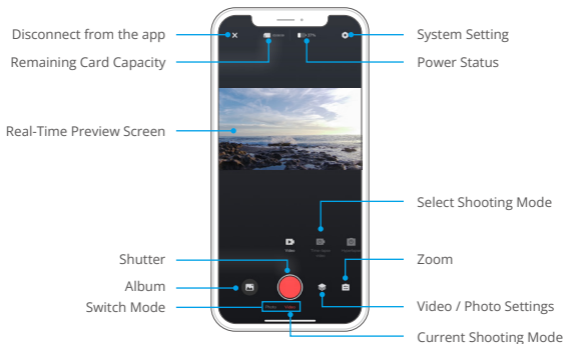
- (5) After completing the above steps, exit the WLAN page, and go back to the AKASO GO app. The camera will establish a connection with the app within a few seconds. Once connected, you will gain control over your camera.

Note: The screenshots above are for your reference only.



11.6 AKASO GO App Menu

(1) User Interface



(2) Video



① Video Modes

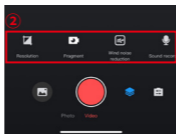
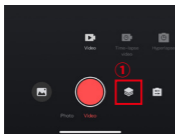
The app offers five video modes: Video, Timelapse video, Hyperlapse Video, and Slow Motion Video. For more details about video modes, please consult the section [Video](#) → [Video Modes](#).

To choose a video mode, tap "Video" and then swipe left or right.



② Video Settings

To access video settings, simply tap on the icon . You can tap on this icon  again to exit the video settings screen.



Resolution

Resolution defines the image clarity based on its height and width. Higher resolution results in clearer images and larger file sizes.

Note: Resolutions and frames vary based on the selected video format.

Options:

- **NTSC:** 4K30/2.7K30/1440P60/1440P30/1080P120/1080P60/1080P30/ 720P240/720P120.
- **PAL:** 4K25/2.7K25/2K50/2K25/1080P75/1080P50/1080P25/720P100/720P75/720P50/720P25

Fragment

Set the video recording duration. The camera will record video at the set duration. Available only in Video mode.

Options: Off(default)/15S/30S/180S Loop

Wind Noise Reduction

Enhance audio quality by reducing wind noise during recording. Available only in Video mode.

Video Sound

Toggle this setting to record videos with or without audio. Available only in Video mode.

Slow Motion Speed

Adjust the speed for slow-motion videos. Available only in Slow Motion mode.

Options: 1080P 4X/1080P 2X/720P 8X/720P 4X/1440P 2X

Hyperlapse Speed

Determine the rate at which your videos are sped-up. Available only in Hyperlapse mode.

Options: 30X/15X/10X/5X(default)/2X

Timelapse Interval

Set the frequency for capturing video frames in Timelapse mode. Available only in Timelapse mode.




Options: 2s/5s(default)/10s/30s/1min/2min/5min/10min/30min/1h

Capture Duration

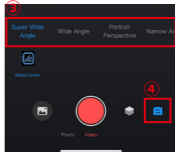
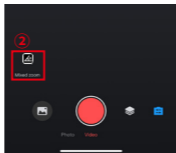
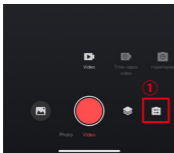
Set the duration of the video captured in Time-lapse mode. The camera will automatically stop recording after the set time duration. Available only in Timelapse Video mode.

Options: Off(default)/5min/10min/15min/20min/30min/60min

③ Angle

By tapping on the icon  in the bottom right corner, then tap on the mixed zoom icon , you can access the angle settings screen. To exit this screen, simply tap on this icon  again.

Options: Super Wide Angle / Wide Angle / Portrait Perspective / Narrow Angle



(3) Photo

① Photo Modes

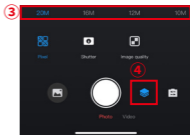
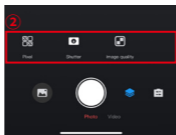
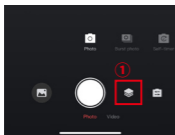
The app offers four photo modes: Photo, Burst Photo, Self-timer, and Timelapse Photo. For more details, you can consult the section **Photo → Photo Modes**.

To select a mode, tap on “Photo” and swipe left or right.



② Photo Settings

Tap the settings icon to access or exit the photo settings.



Pixel

A larger pixel value results in a higher-resolution, clearer image and bigger photo size.

Options: 20M(default)/16M/12M/10M/8M

Shutter

Adjust the duration the camera's shutter stays open. Keeping the shutter open throughout the desired exposure time may be useful for low-light scenes, illuminated subjects, or water elements.

Options: Auto(default), 5S, 2S, 1/125S, 1/250S, 1/500S, 1/1000S, 1/2000S

Burst Number

Determine the number of photos taken in Burst mode with a single shutter press. Available only in Burst Photo mode.

Options: 3 Shots/5 Shots/8 Shots

Self-timer Interval

Set the countdown before the camera takes a photo. For example, with the self-timer interval set to "3s", the camera will initiate a 3-second countdown, then automatically activate the shutter to capture photos. Available only in Self-timer mode.

Options: 1s/3s/5s/10s/30s

Timelapse Interval

Choose how frequently photos are taken in Timelapse Photo mode. For instance, if you set the Timelapse Interval to "3s", the camera will continuously capture photos every 3 seconds. Available only in Timelapse Photo mode.

Options: 3s/5s/10s/30s/1min

Capture Duration

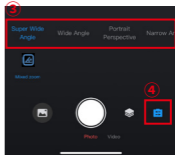
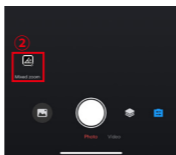
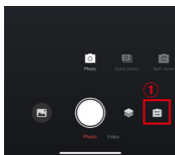
Specify how long the camera captures photos before automatically stopping. For example, if you choose a capture duration of "5min", the camera will cease capturing photos once the 5-minute mark is reached. Available only in Timelapse Photo mode.

Options: 5min/10min/15min/20min/30min/60min

③ Angle

Tap the angle icon and then the mixed zoom icon to access angle settings. To exit, tap the icon again.

Options: Super Wide Angle / Wide Angle / Portrait Perspective / Narrow Angle

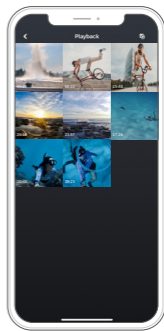
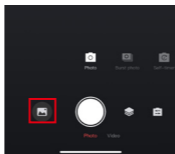


(4) Album

① Accessing the Album

Tap the "Album" icon in the bottom left corner to view videos and photos stored on the SD card.

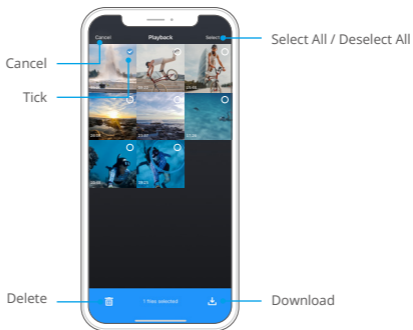
A: Tap the "Album" icon in the bottom left corner to view videos and photos stored on the SD card.




B: Once inside, swipe up to see all files. Select any file to play it.

② Download Files to Your Phone

You can download video or photo files stored in the memory card via the AKASO GO app. To do this, follow the steps below:

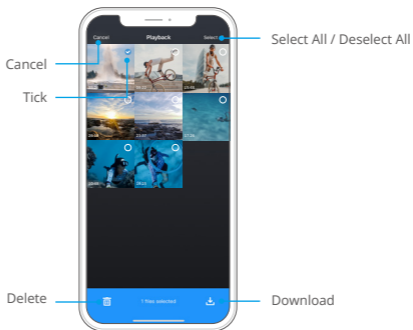



- After accessing the album, tap on the Select icon in the upper right corner.
- Select the file you want to download.
- Tap the **"Download"** icon  in the bottom right corner, and then confirm download.
- The file will be saved to your phone's gallery once the download completes.

※ Do not alter Wifi settings or disconnect from the app during download.

③ Delete Files on the App

Follow the steps below to delete files on the app.




- Access the album and tap the Select icon in the upper right corner.
- Select the file you want to delete.
- Tap the "Delete" icon  in the bottom left corner, and then confirm deletion.
- The selected file is now deleted.

※ Do not alter Wifi settings or disconnect from the app during deletion.

(5) System Settings

5.1 Accessing the System Settings Screen

Tap the Settings icon  in the upper right corner to access the AKASO GO app's settings screen.



Firmware update

A firmware update can resolve compatibility issues, improve the camera's functions, and enhance the Wifi connection.

Image stabilization

Image stabilization expertly reduces lens shake, delivering smooth and pristine video quality. This is ideal for capturing scenes involving activities like riding, skating, and handheld use.

Video standard

Select the video format.

Options: NTSC/PAL

Video encoding

Video encoding is the process of converting a raw video file into a compressed format that takes up less storage space. This camera supports both H.265 and H.264 video codecs, each offering different image effects and compression ratios.

Distortion calibration

This setting corrects the fisheye effect that can occur in wide-angle shots, resulting in distortion-free images. You can choose to turn it on or off on the camera or via the app.

Metering mode

Choose the metering mode for different scenes.

Options: CAM(default)/AM/CM/AFM

EV

EV (Exposure Value) lets you adjust the brightness of your photos and videos. A higher EV value creates a brighter image, while a lower value results in a darker image.

Options: 3.0EV/2.5EV/2.0EV/1.5EV/1.0EV/0.5EV/0EV(default)/0.5EV/1.0EV/1.5EV/2.0EV/2.5EV/3.0EV.

ISO

ISO allows you to adjust the sensitivity of both photos and videos to light.

Options: Auto(default)/100/200/400/800/1600/3200.

White balance

White Balance fine-tunes the color temperature of your videos and photos, ensuring optimal color accuracy in both warm and cool lighting conditions.

Options: Auto (default)/2300K/2800K/3200K/4000K/4500K/5000K/5500K/6000K/6500K.

Sharpness

Adjust the sharpness of your scene's elements to capture fine details, there by enhancing the overall image or video quality.

Options: 0/1/2/3(default)/5/6

Image Quality

A higher Image Quality setting directly translates to better image quality, often accompanied by larger file sizes.

Options: High / Standard (default) / Low

Driving Mode

In this mode, the camera will automatically record video and save video files every 3 minutes by default. Additionally, when the camera powers off, videos will be saved automatically to prevent any loss of footage. The camera also records loop videos in this mode, meaning that when the Micro SD is full, old files will be auto-matically overwritten by new ones to ensure continuous recording.

Options: On/Off (default)

WDR

WDR (Wide Dynamic Range) is ideal for use in high-contrast scenes. You can turn this feature on or off.

Options: On/Off (default)

Filter

This setting offers multiple options for you to choose from. With different filters, you can capture the most gorgeous footage.

Options: Normal(default)/Vivid/Diving mode/Snow View/Black & White/Retro/Negative/Red/Blue/Green

Dark Light Mode

Dark Light Mode helps improve the brightness of images by prolonging the exposure time, making it ideal for use in night scenes.

Options: On/Off (default)

Time stamp

When enabled, the time and date appear as a watermark on your videos and photos.

Options: On/Off (default)

One Key Fast Shooting

Enable the camera to automatically turn on and start recording as soon as you press the Shutter button.

Options: On/Off (default)

Gyroscope

The camera's built-in 6-axis gyroscope can detect how you hold the camera, allowing for a more enjoyable capture experience. With Gyroscope enabled, the camera intuitively captures vertical shots when held upright, and switches to widescreen when held sideways.

Options: On/Off (default)

Auto shutdown

Specify the auto-shutdown interval for the camera. It will shut down automatically after this time.

Options: Never/1min/3min/5min/10min

Auto screensaver

Determine when the camera screen turns off automatically. To keep it always on, set this to "Never".

Options: Never/1min/3min/5min.

Format microSD card

Format the SD card. Formatting will delete all files stored in the card, so be sure to back up important files before formatting.

Factory reset

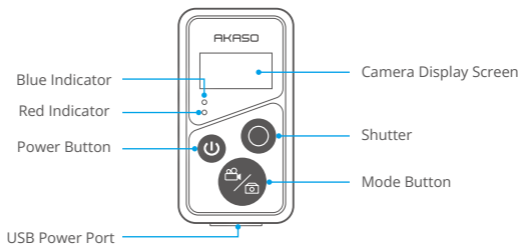
Reset all settings to factory defaults and closes all connections.

Camera version

Check the current version of your camera.

12. Remote

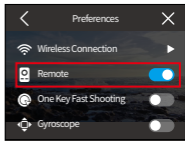
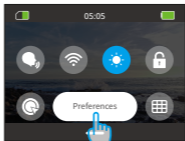
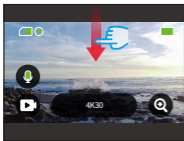
Once your camera is paired with the remote, a simple button press lets you take control remotely.



12.1 Connect to the Remote

Follow these steps to connect your Brave 7 action camera with the remote:




- (1) Press the Power button to turn on the remote control. The red and blue indicators on the remote will be flashing quickly.
- (2) Enable the Remote feature on the camera. To do this, simply swipe down to access the quick menu and locate "Remote", then turn on the remote feature by using the slide switch.



- (3) Press and hold the remote's mode and Shutter buttons at the same time till its screen displays the date. The two indicators will stop flashing.
- (4) The remote is successfully connected to your camera.

Tip: The remote will be connected to the camera automatically in your second use.

12.2 Button Operation Instructions

	Press	Turn the remote on or off
	Press and Hold	Turn off both the remote and the camera
	Press	Start/stop recording or start shooting
	Press	Toggle between the video and photo modes

Power Button

Press the Power button to turn the remote on or off. You can turn off both the remote and the camera by pressing and holding the Power button.

Shutter Button

Press the Shutter button to start /stop recording or start shooting.

Mode Button

Press the Mode button to switch between the video or photo mode.

12.3 Indicators

Red Indicator: Remains on while charging and goes off when the remote is fully charged.

Blue Indicator: Blinks once when starting / stopping recording, or capturing photos.



13. Mount Your Brave 7

Enhance your user experience by mounting the camera to various gear like helmets and handlebars. Here's a quick guide. Always ensure the camera is securely placed in the protective camera frame.



Then, secure the action camera on the buckle mount.



You can install the camera on a helmet using different accessories.





You can also install the camera on a handlebar.



14. Troubleshooting

For in-depth troubleshooting guidance, please refer to AKASO's official technical support page: <https://support.akasotech.com/hc/en-us>

15. Battery Maintenance

15.1 Maximizing Battery Life

- (1) Before using the Brave 7 action camera for the first time, charge the battery fully and secure it in its slot.
- (2) Use the Screensaver setting or capture at lower resolutions and frame rates.



- (3) Charge the battery fully before storage.
- (4) To ensure optimal performance, replace the battery annually.

Warm tip: Please only use AKASO charging cables and batteries in case of any damage caused to this camera.

15.2 Battery Handling and Storage

- (1) If storing for extended periods, maintain a battery charge of 50-60%. Charge every 3 months and discharge the battery every 6 months.
- (2) Do not store the battery with metal objects such as coins, keys, or necklaces. If the battery terminals come close to metal objects, a short circuit may cause fire.
- (3) Store in dry areas, safe from potential physical damage caused by squeezing or collision.
- (4) Avoid using or storing the battery at high temperatures, such as in direct sunlight or a hot compartment. The battery will heat up, malfunction, or have its service life shortened in these conditions.
- (5) Avoid using or storing the battery in low-temperature environments, as this will shorten the battery life or cause it to malfunction.
- (6) Avoid environments with strong static or magnetic fields; these can compromise the battery's protective unit, posing safety risks.
- (7) If the battery emits an odor, overheats, changes color, gets distorted, or exhibits any anomalies, discontinue use and remove it immediately from the camera or the battery charger whether it is being used, charged, or stored.
- (8) Safely insulate used electrodes to prevent potential hazards.
- (9) Never discard batteries in fire to prevent the risk of explosion.



16. Precautions

- (1) We do not guarantee any reason to give returns within 7 days from the date of purchase.
- (2) Products damaged by misuse are not eligible for returns.
- (3) The product must be returned brand new, together with all its accessories, including paperwork, in its complete original packaging. Please do not dismantle the product for checking, or destroy the packaging.
- (4) Incomplete, lost, or damaged original packaging may render the product ineligible for returns.
- (5) Using the camera while bathing or in hot springs may result in water damage.

17. Contact Us

 (888) 466-9222 (US)

 cs@akasotech.com

 www.akasotech.com

For any inquiries about AKASO products, please feel free to contact us. We will respond within 24 hours.

